

Statesman

THE STAFF MAGAZINE OF THE STATE SAVINGS BANK OF VICTORIA



August, 1974
No. 64

Statesman

Managing Editor
TREVOR S. CRADDOCK

Editor
BILL PATEY

Associate Editor
TOM SEDUNARY

FRONT COVER:

A tranquil, sunlit landscape in greens and golds will be our 1975 calendar picture. The painting, depicting the Ovens River near Bright, is by Frank Mutsaers, Dutch-born local artist, whose 'Silvan' picture was featured on our 1974 calendar.

STATESMAN is produced at two-monthly intervals by the Public Relations section of the State Savings Bank of Victoria. Staff comments on the magazine are invited. The editorial team welcomes suggestions for articles and pictures, nominations for Girl, Man and Smiling Teller of the Month, and contributions to State Secrets and Teller Talk. Column paragraphs published earn \$2 for the contributors.

All correspondence and contributions should be addressed to The Editor, Statesman, Box 267D, Melbourne. (Phone 60 0531, ext. 28 or 119.)

We bled for another bank!

130 ANSWERED A CALL TO ARMS



● TREVOR CRADDOCK, Chief Manager, Marketing, was one of the first S.S.B. volunteers to "part with a pint" on Blood Donor Day.



● CAROL STEWART, of head office Clearing Section, cheerfully allowed the Blood Bank to make a withdrawal — to ease its liquidity crisis.

The Red Cross decided a few weeks ago that S.S.B. blood was worth bottling — so they asked us to donate some, for use in emergency transfusions.

We appealed to the head office staff for 72 donors — and received 130 offers from officers ranging from 18-year-olds to over-60s.

A mobile blood bank parked outside head office for a whole day,

taking donors four at a time. The overflow of volunteers were diverted to Red Cross Headquarters in the city.

(It was unofficially reported that one officer's blood was rejected because of excessive alcoholic content. The nurse who attended this donor is reported to have said "That's the first blood sample I've ever seen with a 'head' on it. We'd have to blow the froth off before we could use it.")

BASC—Bound

The Bank's representative for the forthcoming 1974 Bankers' Administrative Staff College course—District Inspector SCOTT WALTERS (left) consults Staff Superintendent RON WADE, who will be Chairman of the course. BASC convenes this year at Healesville, from September 3 to November 1. Chief Clerk is Ian Jenkins, Max Watts is Secretary to the Administrative Committee.



ALREADY, 16,000 MERCHANTS HAVE 'PICKED THE CARD'

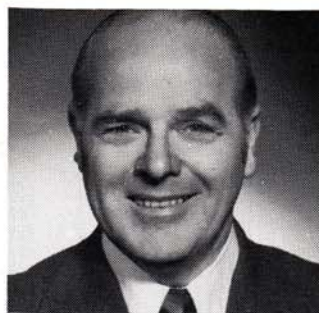
More than 16,000 red/yellow/orange/green BANKCARD stickers have blossomed on the windows of stores throughout metropolitan Melbourne, Geelong, Sydney, Canberra, Newcastle and Wollongong.

As the photos on this page show, the "convenience" card will be accepted at a wide variety of stores and firms not previously covered by "charge account" schemes. It is believed that the versatility of BANKCARD will be one of its greatest strengths.

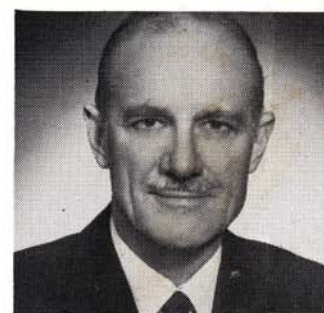


MEET YOUR DISTRICT INSPECTORS

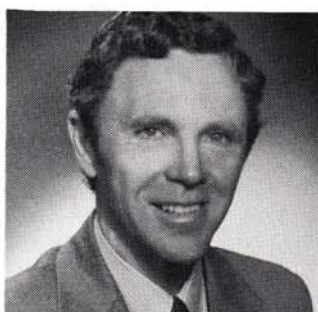
OUR District Inspectors now have an expanded role in branch affairs — having relinquished their auditing duties to officers of the new Internal Audit Department. The fourteen DIs under the direction of Chief Inspector Mr. Tom Paige, are now responsible for: branch business development . . . problem solving . . . staff training guidance . . . advice on lending . . . public relations . . . branch network development . . . security . . . staff reporting . . . and investigations. On this page are the latest photographs of the DIs —and a brief indication of the 40-branch (approx.) districts in which each operates.



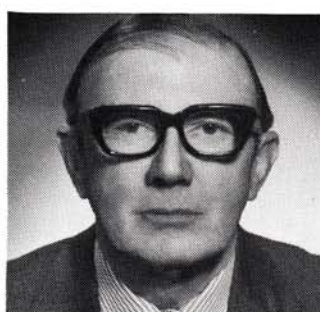
MAX McKERNAN, Senior Inspector: covers all city branches, and acts as Assistant Chief Inspector.



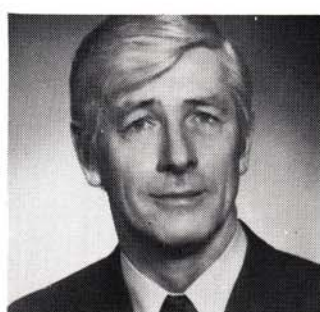
ALAN WAKEFIELD: Noble Park, Mt. Eliza and Parkdale — also Geelong, Bellarine Peninsula and south-west.



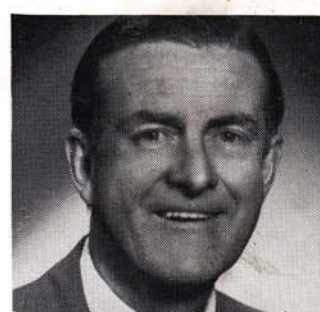
ERROL WOOD: Malvern, eastward to Syndal — also Ballarat area north to Ararat and south to Lismore and Derrinallum.



JOE DOWLING: Altona to Sunshine, Footscray and Laverton — also Gippsland from Berwick to Yarragon.



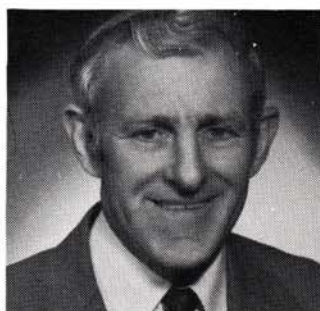
JOE WARD: Suburbs bounded by Blackburn, Mooroolbark and Upwey — also Gippsland region bounded by Yallourn, Omeo and Orbost.



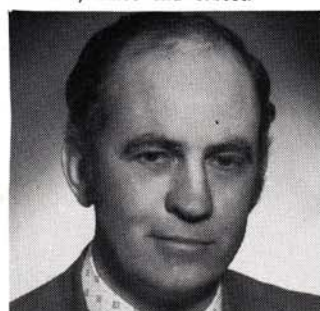
JACK GRIBBLE: Suburbs bounded by Abbotsford, Northcote, Preston and Thornbury — also Wimmera region, Stawell, Kaniva and Hopetoun.



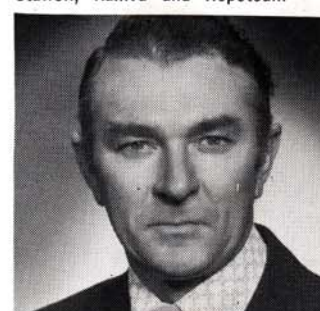
JACK KNIGHT: Brunswick - Coburg - Reservoir districts. Also north-central Victoria from Heathcote to Echuca and Yarrawonga.



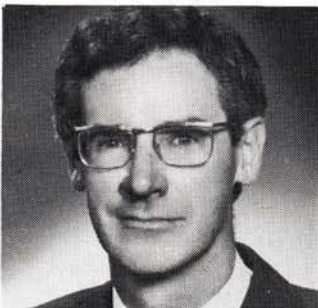
ALF RESIDE: Auburn - Camberwell - Burwood region — also the Mallee, from Wycheproof to Robinvale and Mildura.



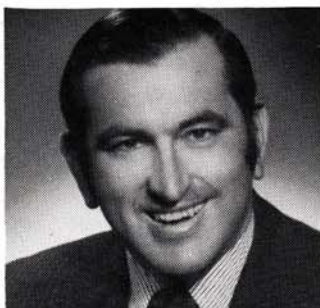
SCOTT WALTERS: From Doncaster to Greensborough and Montmorency — also south-west to Camperdown, Portland and Casterton.



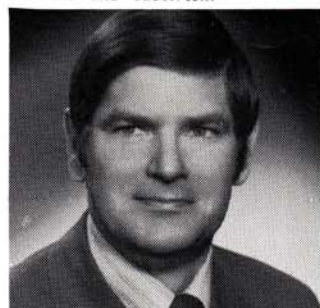
BYRON HILL: From Bentleigh to Moorabbin and Oakleigh — also country region bounded by Gisborne, Alexandra and Belgrave.



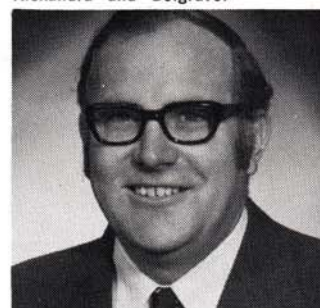
DAVE PRESNELL: Suburbs bounded by Abbotsford, Hawthorn and South Yarra — also north-eastern Victoria from Euroa to Corryong and Bright.



JOHN WILLIAMS: Suburbs bounded by Essendon, Keilor and Pascoe Vale. Country districts from Bendigo to St. Arnaud and Kerang.



KEITH WICKINS: Bayside suburbs from Port Melbourne to Sandringham. Also Mornington Peninsula and South Gippsland to Yarram.



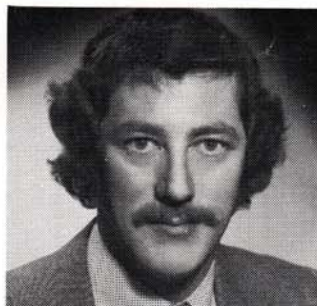
MURRAY MARSHALLSEA: A roving commission. Any city or country district, as required by the Chief Inspector.

... AND NEW BRANCH AUDITORS

OUR new team is headquartered in the Internal Audit Department at Leighton House, Little Collins Street behind head office. Manager is Max Carr. Branch Audit staff carry official identity cards and are authorised to examine and review all branch records. Their areas, each covering about 60 branches—are listed below their photos.



MALCOLM ANDERSON: Metropolitan on-line and centralised branches—also branches in provincial cities.



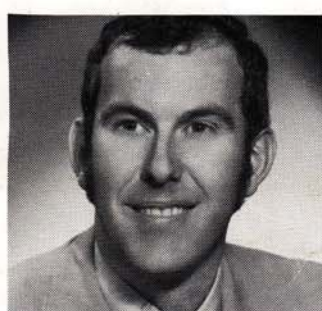
TERRY GEORGE: Metropolitan on-line and centralised branches—also branches in provincial cities.



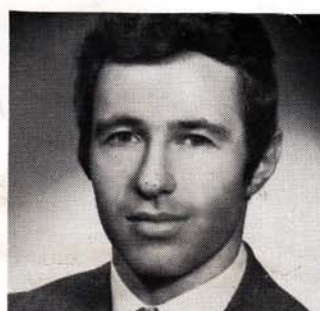
DAVID SMITH: Metropolitan on-line and centralised branches—also branches in provincial cities.



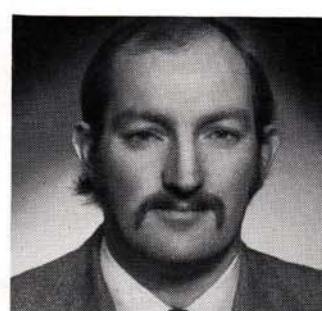
RUSSELL HOMEWOOD: North-western suburbs — and Mallee region.



PETER SMITH: City and inner suburbs —and south-western Victoria.



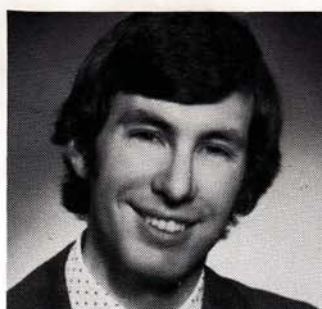
ARNOLD WILL: South- south - eastern suburbs — and East Gippsland.



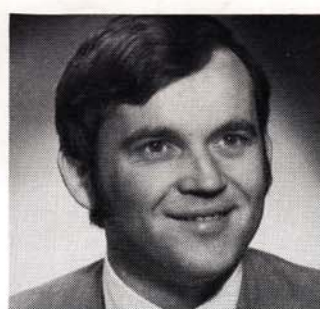
FRANK GUPPY: North-eastern suburbs —and Western District.



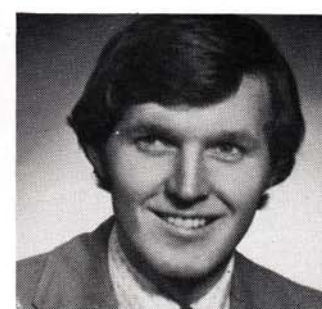
BOB TAYLOR: South-western suburbs —and Gippsland region.



GRAHAM FINN: South-eastern suburbs —and East Gippsland.



LES SCOBIE: Eastern suburbs—and north-eastern Victoria.



DAVID MCKENZIE: Beach suburbs—and Central Victoria.

FIRST FOUR FEMALE ACCOUNTANTS

History was made by the appointment last month of the Bank's first fully-fledged female accountants:

Miss Frances Smith, Accountant Grade 2 to Personal Loans (joined Bank in 1945).

Miss Peggy Burchett, Accountant Grade 3 to Legal Department (joined Bank in 1940).

Miss Lorraine Staggard, Accountant Grade 3, to Relieving Staff (joined Bank in 1958).

Mrs. Pat Love, Accountant Grade 3 to Hawksburn (joined Bank in 1960).



Frances



Peggy



Lorraine



Pat

OUR BANKCARD SLOGANS

The BANKCARD slogan contest run by 'Countdown' newsletter attracted many entries from the various participating banks. Winning slogan, submitted by a supervisor at the Commonwealth Bank, was 'BANKCARD puts it all together'.

Here are a few of the entries submitted by SSB staffers:

- Why carry money and take a chance? Keep a BANKCARD in your pants'—branch officer, Eltham (presumably, male. Ed.).
- BANKCARD — your instant bank.—R. H. Brooks, Insurance Dept.
- Safe card — BANKCARD — R. Maxwell, Trafalgar.
- BANKCARD lessens shopping stresses — R. Bathols (Rel. Staff).
- Buy by BANKCARD—T. Wiles (Head Office).
- If all you have in your pantry is lard, then why not try our new BANKCARD?—N. Wright, Stawell.

Did you notify us of your last change of address?



Please tell the teller

NO ACTIVITY, NO INTEREST

INTEREST FOR USERS ONLY! A few people inside and outside the Bank have gained the impression that some kind of "interest" charge will be made to cardholders who are not using their cards. In fact, the **ONLY** interest charge (at 1½% per month) will be on cash advances (from the date drawn) and balances outstanding 25 days after billing. Users of BANKCARD can have up to 55 days free of interest.

REPORT THOSE NEW ADDRESSES

SAVE YOURSELF TROUBLE LATER! The little yellow counter card now on display in branches is most important—as a means of making sure that valuable Bankcards are not sent to "old" addresses. To avoid a flood of queries and complaints to branches after the BANKCARD launching date, be sure to report promptly to head office any new addresses of depositors who are going to receive the cards.

\$100 STAFF PHOTO CONTEST

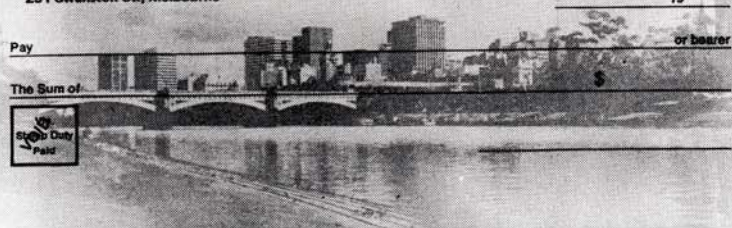
The Bank is considering the possibility of introducing a new "picture cheque" design — to be printed in full color, as opposed to the present monotone picture.

Amateur photographers on the staff are invited to submit their color photographs of "the Victorian scene" which are suitable in terms of **SHAPE AND COMPOSITION** — to form the basis of a cheque. All kinds of outdoor scenes are acceptable subject matter — Victorian landscapes, seascapes, river, lake or snow scenes . . . with people, birds or animals.

Management will award \$100 for the best photo, but will not guarantee it will be used on cheques. Entries should be sent (with protective backing, and name and address of photographer) to STATESMAN by mid-September.

The State Savings Bank of Victoria

Central Branch 603-006
231 Swanston St., Melbourne



IMPORTANT: Any photo (or section of photo) submitted for cheque use should have clear space or faint images wherever print must appear, and wherever customers have to write — especially in the space provided for the "amount in figures". Use the above cheque layout as a guide.

OUR MAN OF THE MONTH

Nineteen-year-old Eugene Cody, a head office Insurance Department clerk, is learning to box.

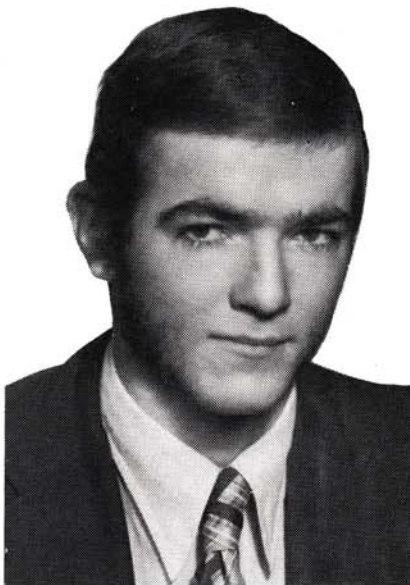
Although Eugene has had boxing gloves since the age of 10, he took up the sport seriously this year, and now trains six days a week. He runs a couple of miles every morning and spends two hours each night in the gym — skipping, shadow boxing and sparring.

Eugene will start "pro" fighting as a middleweight next year, and his ambition is to win a title.

At 6 ft. 3 in., Eugene is also well suited to basketball, and he plays a weekly game with local Doncaster team, "Yarraleen".

Cars are another interest. Eugene and a mechanic friend spend a lot of time working on cars, including their own somewhat "warmed" machines.

Like many Sagittarians, Eugene is "above average height" and "out-



wardly tough". Although his "aggression when roused can be formidable", his "capacity for friendship makes him popular".

Eugene, who doesn't have a steady girl friend, would most probably be attracted to Leo or Aries subjects.

Satisfied Depositor

No, not this chap . . . he's a New Guinea Headhunter on a picture postcard received by Elizabeth Street branch manager Jack Rush. The card brought a "thank you" message from a depositor living in Bulolo. "Lizzy" branch had arranged a money transfer, and the depositor praised our "prompt and efficient service". Quite a few such messages come in from far-flung contented customers.

We have regular correspondents in South Vietnam, South Africa, the United States and New Zealand.



Paige, Atkinson and Wade. Their occupations (not in order of their names) are: stockbroker, doctor, composer, architect, historian and professor.

The professor lives between the architect and Mr. Atkinson. The stockbroker lives next door to the doctor. Mr. Ross has one of the end houses. The composer lives directly opposite Mr. Kelly, but Mr. Torrens does not live opposite the doctor. Mr. Paige lives between the historian and Mr. Wade. Problem: fit the correct occupations to the six names.

ANSWERS: Page 11.

Puzzles

1. Change WET to DRY in six moves, altering one letter at a time and not changing the order of the letters.
2. A small street contains six houses — three on one side and three directly opposite them on the other. The occupiers are six professional men, Messrs. Ross, Kelly, Torrens,

STATE SECRETS by the teller

ENQUIRER at branch: "How do I stand for a loan of \$40,000?" Manager: "For \$40,000 you don't stand — you grovel."

★

BRANCH accountant, reporting his activities for the local church, wrote: "We have formed a committee to finance a new spire, and I am sitting on it."

★

FLASHBACK: Our Creswick manager Don Basham found an old letter written to head office in 1900 by the acting branch manager. It said: "I beg to acknowledge receipt of your letter of 23rd instant informing me of the date Mr. Lomax is to relieve me. The premises have been fumigated and will be ready for him on his arrival."

★

HEAD office clerk who is a cricket fan has three trays on his desk, marked IN, OUT and LBW. He enjoys telling people the third sign means LET THE BLIGHTERS WAIT!

★

FOLLOWING our recent report about a collision between a chicken truck and a cotton truck, we have been informed of another crash — between one train loaded with custard and sherry and another carrying jelly and stale cake. The trains reached their destinations a trifle late.

★

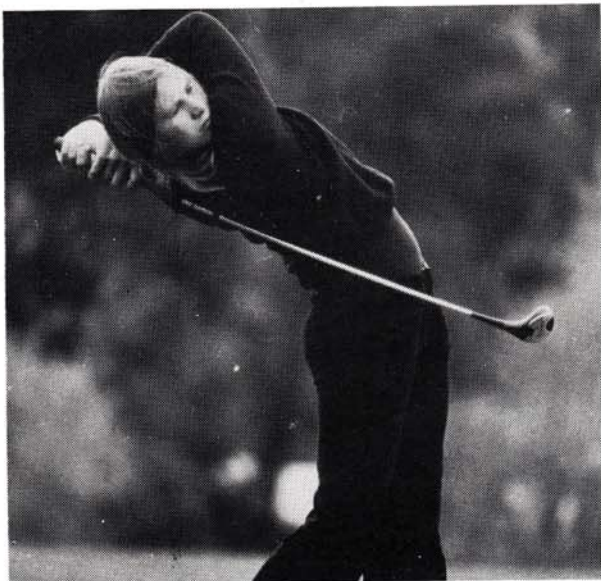
MANAGER, ticking off clerk: "Do you think you are an executive of this organisation?" Clerk: "No, sir." Manager: "Well, in that case don't behave like an idiot."

★

ONE of our accountants who is having trouble getting his pants back from the cleaners is threatening to sue for "promise of breeches".

★

COUNTRY branch accountant, wishing to insert death notice in local paper as a tribute to a mate, asked: "How much will it cost?" "Two dollars an inch," was the counter clerk's reply. "Well, forget it," said the accountant, "This bloke was six foot three."



Rutherglen

Around the bunkers with junior champ

Pictured during recent practice for the Australian Golfing Championships is promising State junior, Louise Hawking, 18, a Clerical Assistant at Rutherglen.

The Championships, to be held later this month in Adelaide, will be the second major tournament for Louise. In May she was one of four Victorians who competed with Australia's top amateurs in the Rene Erichsen Tournament. Louise finished 9th in the 72-hole scratch event.

Louise took up golf just four years ago and she rarely receives professional coaching. (Photo by courtesy "The Age".)

around
the
branch

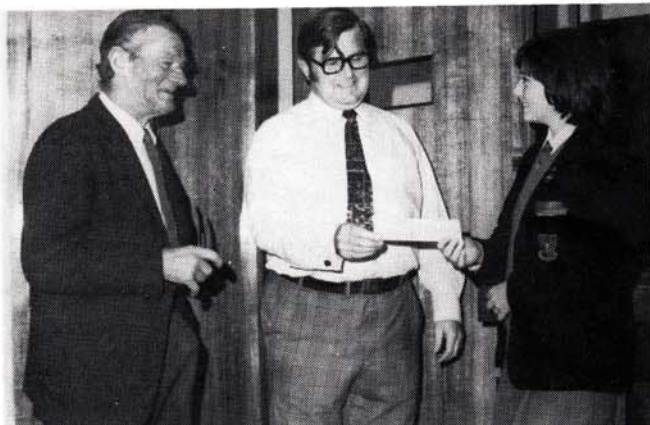


—with To

Mortlake

10,000th Depositor

Mortlake manager Neil Clement is pictured (centre) presenting a \$10 credit to schoolgirl Sandra Snape, the branch's 10,000th depositor, since it opened in 1921. Oldest male account holder, Mr. Jack Beardsley (left), received a similar credit to his account.



Frankston

MORE PRAISE ON THE PENINSULA

Our last issue reprinted a letter from a depositor praising Seaford branch staff for their courtesy. Now a lady has written a similar letter to manager Tony Bull as follows:

Dear Mr. Bull,

Congratulations on your appointment as manager to the nicest bank in Australia. Also, my regards to Mr. Bristow, your accountant with the bright, smiling face. I have been going to the Young Street branch every Thursday for many years now and have watched it grow, but it is still such a "personal" bank, where a customer feels like a name and not just a number. I do hope you will keep it this way and not try to copy "big brother" around the corner. Don't grow any more. I don't want to borrow any money, but just to express my pleasure, in writing, of the personal service I have always experienced at "my little bank" when so much of Frankston has become mechanised and de-personalised.

Yours sincerely,

Dorothy M. Harrison

Ballarat East

Senior clerk, Murray Jensen, 25, submitted a snapshot and a list of interests of three attractive staff members.

The photo was taken in color with the new instant-developing camera.

The girls are, from left to right: Lorraine Dodd (plays hockey and basketball, and is an avid St. Kilda

INSTANT IMAGE

supporter); Margaret Rodgers (keen squash player), and Christine Marett. (Murray says that newly-wed Christine "hasn't developed a sporting interest other than looking after her husband".)

Banking is a family occupation for Lorraine. Her father, sister, uncle and cousin all work in the S.S.B.



Relieving Staff

TRIXIE TAKES TROPHY

Reliever Kathy Every says that tender loving care and strawberry marshmallow biscuits are the keys to the success of her red-fawn greyhound, Shawnee Maid, known as "Trixie".

Trained by Kathy's husband, Greg, Trixie has won three of her four starts, including the Wangaratta Distance Championship, for which she scored a trophy.

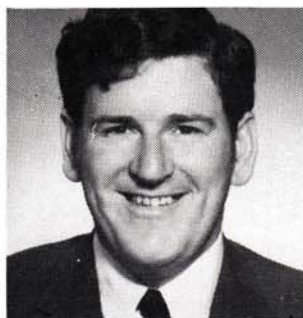
Kathy and Greg have reared Trixie since she was a pup and are looking forward to continued success and ultimately to a litter of potential champions (from Trixie).



Relieving Staff

Mack springs back

Relieving manager Mac Spring has been elected a member of the International Board of the Association of Apex Clubs — for the third time.



The Board is the controlling body of Apex, and its 15 members decide on policy and service projects.

Mac is also Chairman of the Apex Extension Committee, which approves the admission of new clubs to the organisation which comprises over 750 Apex clubs throughout Australia and South-East Asia.

Since joining Apex at Echuca in 1965, Mac has held many official positions and has attended conventions throughout Australia and in Hong Kong and the Philippines.

Kaniva

SNAKE MADE 'EM QUAKE

The Kaniva staff was disturbed from its morning toils recently when word was passed around that a 3 ft. brown snake had invaded the lunch room.

Although volunteers to rectify the situation were scarce, the snake was finally killed by teller Graeme King.

Manager John Collins says the staff ate lunch outside that day.

STOP PRESS:

Relieving manager Max Gent later reported that he found a red-back spider — not on the toilet seat, but close to it — on a cupboard in the rest room. Max killed the spider, which measured about 1 inch in diameter, and destroyed three large egg cases nearby. What next?

Korumburra

TOWARDS A.D.2000

Manager Graeme Faull recently took some notes of an historical nature about Korumburra branch—and then buried them. The notes, which were part of a letter to a future Korumburra branch manager, were placed in a "time capsule" to be opened in the year 2000. The capsule, an old sea-buoy, was recessed into a wall of a mine shaft at local historical park, "Coal Creek".

Graeme's contribution to the capsule contained copies of many interesting items, including a letter appointing Korumburra's first manager (dated 1902), and a photograph of the original branch premises, which were demolished in 1939.

Mentone East

CHARITY HELPER RAISES \$1000

Lynette Pate-man, 18, a teller at Mentone East, was an entrant in last month's Melbourne Apex Charity Quest staged to help finance research into nerve deafness.



Although not sponsored for the quest, Lynette raised almost \$1000 for the cause. Street stalls, progressive dinners, a car trial and a mannequin parade all helped Lynette to reach this tally.

GIRL OF THE MONTH

"Piscean girls are usually attractive and dreamy . . . many of them walk like a dancer."

So say the "stars" of ballroom dancing enthusiast Marie Perabo, 20, a clerical assistant in Personal Loans Department.

Marie learned modern ballroom dancing for only a year, but has already reached bronze and silver medal status.

Her dancing club has a Social Set (of which she has been secretary)

and its members often get together at barbecues, film nights and snow picnics.

Marie nominates sailing, swimming and ice-skating as her favorite sports.

She also plays an occasional game of basketball with a Clayton church team.

Her special likes are "people, and bush-walking"

while she lists "smoking, rainy days and feeling tied down" as her pet hates.

Marie's ambition is to travel around the world, "taking 10 years to do so".

Marie has a steady boy friend and says that her ideal husband would be "patient, fun loving and able to dance".

He would also be fairly rich. Likely soulmates are Scorpio and Cancer people.



Answers from Annabel...



Dianne Beynon (left), our Market Research Analyst since March, was photographed at Elizabeth Street branch—while interviewing clerical assistant Annabel Smith about her recollections of a BANKCARD lecture.

Dianne, who has a Bachelor of Commerce degree (Melbourne) was previously employed at the State Treasury. Her work for the Bank involves much questioning of SSB staff and members of the public. Replies are analysed to form the basis of reports which help guide the Bank's marketing policies.

MAFIA APPLICATION FORM

Watsa u name U age

Strita name U ouse namba

Isa U girl or boy Justte chuza one

Putta down werra u werka now

Wasa u ever inna bigga ouse

For whatta wazza u inna big ouse for

U shotta one guise U keednappa nobody

U bomba nobody's ouse

U wanna be de bigga shotza someday

U likka eat garlic Pizza Salami

U know ow maker de ciment shooz

U driva de car Whatta kine

De Falcon G.T. De Charger

De Olden (fasta one) De Fiat 500

U see de Got Fadda (or justte de movie)

Iffa u application issa approved u willa getta desa benifets -

1 pair darka glass	1 blacka shirt widda white tie
1 appy face button	1 kilo mozzarella cheeza
1 pair ciment shooz	U meeta de Got Fadda
1 pair pointie shooz	Free berial

18 x 10 picha Franka Sinatra

Joinne de clubba now (while u stilla can write)

De MAFIA - an equil oppertuniti organnazatsioni

Maka u marka

Puzzle Answers

1. WIT, WIN, WAN, WAY, WRY, DRY.
2. Mr. Kelly is the historian . . . Mr. Paige the stockbroker . . . Mr. Wade, the doctor . . . Mr. Atkinson, the composer . . . Mr. Torrens, the professor . . . Mr. Ross, the architect. Reading from one end of the street, the houses on one side must be occupied by Messrs. Kelly, Paige and Wade, in that order—and on the other side by Messrs. Atkinson, Torrens and Ross in that order.



**use of
the
Thumb**

As promised in our last issue, here is an explanation of the purpose of the human thumb:
to support the underside of sandwiches.

OUT OF ORDER



Officers from all ranks of the departments served by the State Offices switchboard resort to many varied and peculiar ways of describing the faults that beset their telephone. The telephonists who report these faults to a frequently mystified technician keep a list of those guaranteed to raise a laugh.

The following "troubles" are exactly as reported:

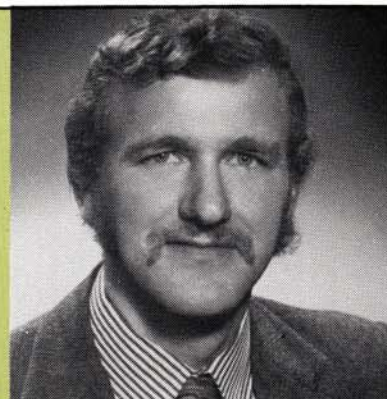
- Calling cord No. 6 cuts off speakers—he's O.K. if held in position.
- Button won't release when pressed—at present halfway up and down.
- There's something wrong with my dial.
- Continuous crackling when lifting phone cradle. Would you look at his contact?
- When most needed can't get it.
- Not receiving incoming calls. Stuck outside somewhere. Don't know where.
- Completely dead. Needs it pretty bad, been without it for a week.
- Can't get in or out anytime. Could someone have a look?
- When he pushes button to the left nothing happens . . . just dead.
- Can't get in or out. Technician looked yesterday.
- No dial tone half the time. All right early this morning but before lunch was in and out before he knew.
- No result. Man tried to get her but couldn't.
- Can't buzz his girl anymore. Communications are lost after pressing button.
- Just tingles. If not right on desk misses it.
- This is out of order. He has many voices and can't shout louder. He thinks his box is out of order.
- Dead! Want someone to look at it.
- Can hear ringing all the time. Please let him get out.

—Public Works Department
Staff News Journal.

Newlyweds

After their wedding at St. Mary's, Caulfield North, Karen and David Berrie stopped at a Brighton park on the way to their reception. Karen (nee Jacobsen) works in H.O. Legal Department. The couple honeymooned in New Zealand.

Our new Little League Leader



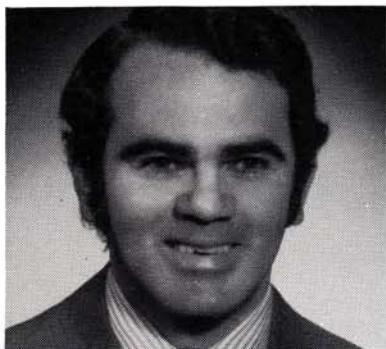
Meet Ken Newton, who recently took over control of the S.S.B. Little League when its founder, Fitzroy coach Graham Donaldson, resigned from the Bank after 22 years' service. Like Graham, Ken is 6 ft. 2 in.

Ken, 29, was the branch accountant at Glenroy before joining head office Marketing Department. Now married, with three young children, he began playing football with Essendon Thirds and Reserve Grade before transferring to country areas. He has coached sides in the Bacchus Marsh and Essendon District Leagues — so is no stranger to football.

Any Little League queries should be directed to Ken on 60 0531, Ext. 64, during office hours.



MEET OUR NEW MANAGERS



V. F. SHANLEY, Macarthur

Frank's Macarthur appointment means a return to home territory — he joined the Bank at Koroit. Frank has been deeply involved in church welfare work, helping disadvantaged families. He and wife Pam have three children. Pam (nee Hance) is a former Swanston Street staffer.



M. J. PEARSON, Beaufort

For 10 years, as Match Secretary of the Presbyterian Tennis Association, Max co-ordinated the match play and tournaments of about 80 teams in the nine sections of the Association. He resigned from this position on moving to Beaufort. Max and wife Dorothy were married in March.



W. D. MOORE, Heywood

Bill was secretary of the Horsham Football Club and a delegate to the Wimmera League before moving to Heywood. He was appointed to these positions after retiring as a player. During summer Bill is a pennant tennis player and golfer. He and wife Cecily have three young daughters.



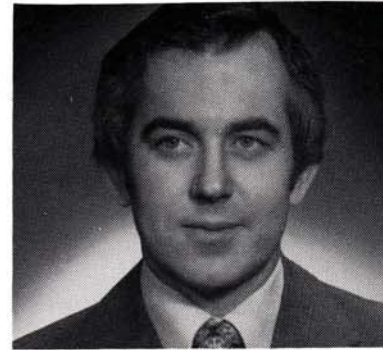
L. T. EAST, Elmore

Both Len and his wife are keen collectors of paintings. Recently Betty sold several of her own oils. A trained youth leader, Len has much scouting experience and would like to coach a junior football team. The Easts have a daughter aged 10 and a son six.



N. E. SMITH, Stanhope

Norm hopes that experience in three Apex clubs, gained over 15 years, will enable him to establish a branch of the club at Stanhope. His other interests include gardening, fishing and family activities with wife Wendy and their daughters, aged 13 and 10.



R. McA. MCINNES, Toora

Although Bob spends most of his spare time with his young family (he and Marie have sons aged two and three), he enjoys outdoors pursuits such as fishing, shooting, swimming and photography. He is also interested in art and has built up quite a collection of paintings.



O. F. NOELKER, Rainbow

Originally from Murtoa, Frank is pleased to "go bush" after 17 years in Melbourne. A keen fisherman, Frank angles "wherever there are fish". No doubt he'll now be specialising in Rainbow trout. He and wife Joan are kept busy by church work and four children, aged from 7 to 12.



L. B. GREEN, Rosedale

Lindsay has played football with country teams for 21 seasons and has not missed a match. Currently centre half-forward for Rosedale in the North Gippsland League, he says that this season may be his last, because he's "slowing up a bit". He and Doreen have four children.



H. E. TIPPETT, City Premises Officer

This is Howard's second "trip" to Premises Department. Earlier in his career he spent seven years there as a clerk. He is the current Returning Officer of the Bank's division of the A.B.O.A. Howard is married and has a six-year-old son and two daughters, aged 12 and 10.

Miss S.S.B. Nominees



Twelve pretty girls lined up this year for the selection of a candidate to represent the S.S.B. in the "Miss Combined Banks' contest at the 1974 Combined Banks Ball. BACK ROW (left to right): Ann Mealy (Correspondence), Julie Hockey (Custody), Sue Dawson (Club Accounts), Jacque Meiers (Correspondence), Judy

Williams (Overseas), Sonia Berveling (Blackburn), Janine Schroeder (Overseas), Chris Franze (Correspondence). FRONT (left to right): Heather Dawes (Internal Audit), Marie Templin (Overseas), Leanne Davis (Deer Park), Kathy Bird (Reliever). In a very close contest, the judges picked Marie Templin to be "Miss S.S.B." at the ball.

OUR GUIDE TO METRICS

We at STATESMAN have found it difficult to grasp the various new metric equivalents, so we have worked out a handy guide showing approximately how the main metric measures compare with the old imperial ones.

LENGTH:

CENTIMETRE: A little less than HALF AN INCH.

METRE: A little longer than a YARD.

KILOMETRE: A little longer than HALF A MILE.

WEIGHT:

KILOGRAM: A little more than TWO LBS.

TONNE: A little less than a TON.

AREA:

HECTARE: Almost two and a half ACRES.

SPEED:

KILOMETRES-PER-HOUR: Just over $1\frac{1}{2}$ times MILES-PER-HOUR (to turn metric speed to miles-per-hour, drop the final digit and multiply the remainder by 6. For example, to convert 60 KM/h, drop the 0 and multiply the 6 by 6. This gives 36 as the approximate MPH equivalent.)

GONE FISHIN'



Here is the list of last month's retirements:

ALLAN MILES (Eaglehawk)
ALAN McRAE (Overseas)
BILL LING (Emergency Staff)
KEITH MENTIPLAY (Custody)
OSSIE TANK (Mt. Waverley)
RON CARISON (Securities)
DON BAETGE (Wangaratta)
ALLISTER HUMPHREY (Custody)

HARRY LEIGH (Ballarat)
ARTHUR HOSKEN (Services Division)
NORM. GILL (Western)
JIM GILBERT (Toorak)
KEITH MORRISON (Seddon)
ALF PHILLIPS (Building Dept.)
GEORGE McNEILLY (Carnegie)
MALCOLM DUNN (Relieving Staff).

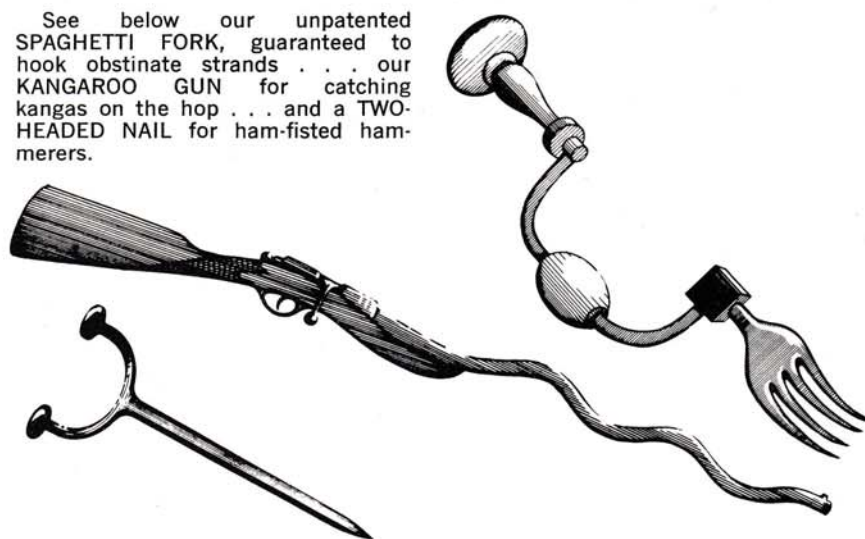
Ready for take-off



Pat Lamblin, of Overseas Department, posed prettily with a model of a "target drone" at our recent display of Australian Inventions in Elizabeth Street banking chamber. The "drone" was developed by the Department of Supply. Pat was developed by Nature.

STATESMAN INVENTIONS

See below our unpatented SPAGHETTI FORK, guaranteed to hook obstinate strands . . . our KANGAROO GUN for catching kangas on the hop . . . and a TWO-HEADED NAIL for ham-fisted hammerers.



teller
talk
by Sue



ONE of my regular depositors is always asking me riddles. Here's his latest: "What is yellow and wears glasses?" (For answer, see bottom of this column.)

★

HEARD about a fussy teller (not one of ours) who pointed out to lady customer that she had forgotten to dot the "i" in her signature. "But can't you do it for me?" the lady asked. "No," said the teller, "it has to be in the same handwriting."

★

DO depositors appreciate being called by name, smiled at, and thanked? The answer is a definite "yes", according to surveys. Although few people SHOW their appreciation, it's there. And sometimes somebody is nice enough to say "thank you" right back.

★

AMERICAN depositor suggested to her bank that it install "a group of roaming musicians and an enclosure of small animals" in the banking chamber, to keep the children of depositors entertained. Some of the local kids I know would probably try to feed the "musos" to the animals.

★

ANOTHER American lady applied to her bank for a book of personalised picture cheques showing STREAKERS. I suppose such cheques would have to be endorsed "PAY BARER".

★

CONCENTRATE when counting money. Don't let anyone or anything distract you (not even a streaker).

★

ACTUALLY it's very hard to count with half-frozen fingers on these wintry mornings. Why doesn't somebody invent self-heating sponges or fingerstalls?

★

WHAT makes a female teller attractive? It's not simply a matter of good looks and grooming. Attractiveness is an attitude. It comes from making a genuine effort to be pleasant. Anyone can be attractive.

★

RIDDLE ANSWER: Banana Mouskouri.

SSB ORGANISATION CHART

BOARD OF COMMISSIONERS

CHAIRMAN: Professor D. Cochrane DEPUTY CHAIRMAN: R.G. Hoban
I.K. Morton, W. Kirkhope, Sir John Anderson, Sir Ernest Coates, R. Neil Walford

GENERAL MANAGER
D. Ross

Deputy General Manager
(Administration)
D.N.P. Kelly

Chief Inspector
T.E.A. Paige

District
Inspectors

Branch &
Agency Ops.

Asst. Chief Inspector - W.A. Jones
Senior Inspector - W.M.S. McKernan

Staff Superintendent
R.W. Wade

Staffing &
Staff Training

Asst. Staff Superintendent: L. Cooper
Staff Mgr. Industrial: F.T. Meyers

Solicitor
A.J. Ellwood

Chief Manager Marketing
T.S. Craddock

Advertising
Business Promotion
Public Relations

Chief Architect
G.F. O'D. Danne

Mgr. E.D.P. Planning
R.R. Strang

Mgr. Premises
J.A. Pretty

Property &
Security

Project Manager
J.L. Horsley

Mgr. Prntg. & Stationery
R. Thomas

Mgr. E.D.P. Operations
A.M. McNaught

Mgr. Branch Mech.
W.M. Bolton

Mgr. Internal Audit
R.M. Carr

Mgr. Securities
A.W. Adams

Mgr. Custody
J.S. Woolford

Mgr. Correspondence
G.A. Kellock

Deputy General Manager
(Finance)
H.E. Torrens

Secretary
M. Souter

Chief Accountant
A. P. Atkinson

Investments
Loan A/cs.

Asst. Chief Accountant - J.F. Ryan

Mgr. Mortgage Loans
W.A. Anderson

(From 26.8.74)

Mgr. Personal Loans
N.H. Warden

Mgr. Bankcard
J.M. Crofts

Mgr. Overseas
S.J. Mason

Chief Valuer
H. Whitehead

Mgr. Current Loans
R.G. Lancashire

Mgr. Insurance
R.H. Brooks

Mgr. Research
J.D. Ewart

Provident Fund Officer
D.S. Chisholm

Staff Counsellor
N.W. Westaway

521 BRANCHES AND OVER 649 AGENCIES